

Code 2963LR-G

**Total Chlorine**  
25 Test Strips

**LaMotte**

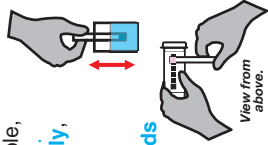
**Insta-Test<sup>®</sup> ANALYTIC**

Low Range TOTAL Chlorine ppm



Using a cup-size sample,  
dip strip for **2 seconds**.

**Remove strip vertically**,  
as shown. **DO NOT**  
**SHAKE OFF EXCESS**  
**WATER**. With pad still  
vertical, wait **10 seconds**  
**and read** the strip.  
Discard strip after  
30 seconds.



- Keep wet fingers out of the bottle.
- Cap bottle tightly after removing strip.
- Store in a cool, dry place.



LaMotte Company  
802 Washington Ave., Chestertown, MD 21620 USA  
410-778-3100 • [www.lamotte.com](http://www.lamotte.com)



Drop holding box and dotted tolerance line